

Dec. 29, 1953

W. M. ECKBRETH
AMUSEMENT DEVICE

2,664,053

Filed July 9, 1951

2 Sheets-Sheet 1

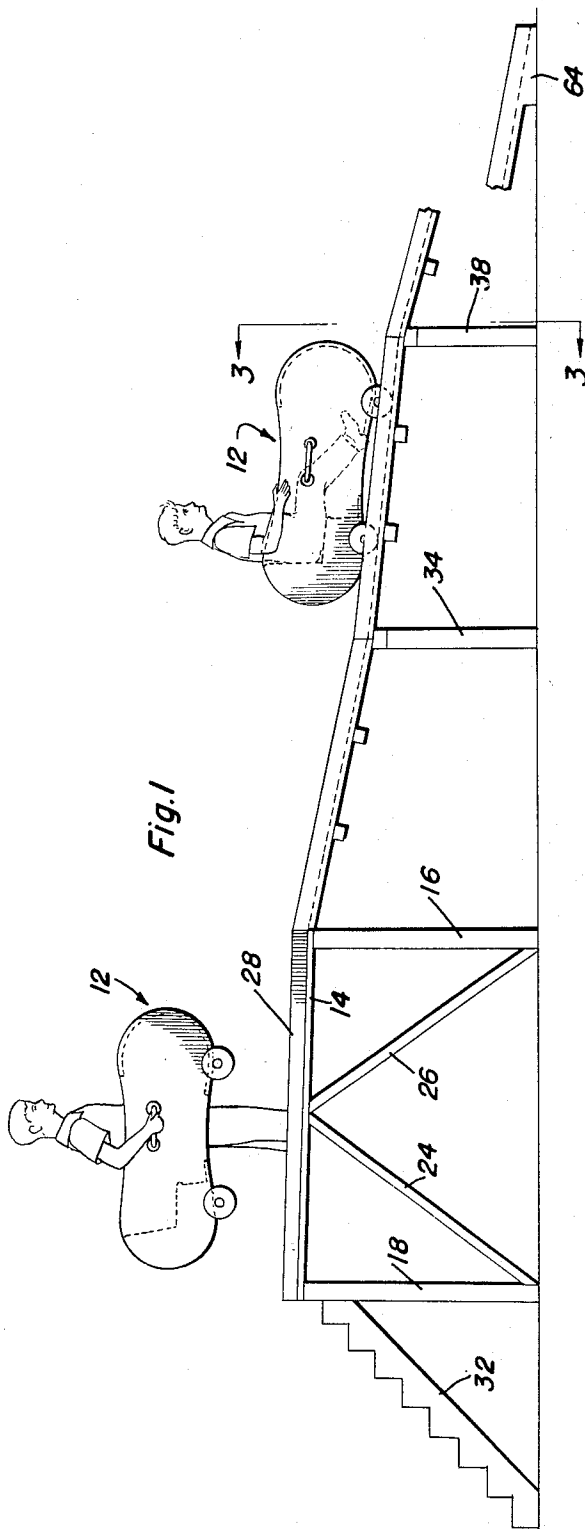


Fig. 1

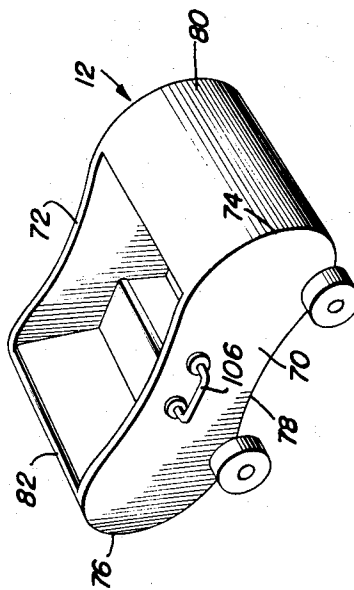


Fig. 5

Walter M. Eckbreth
INVENTOR.

BY *Alvanice A. Orion*
and Harvey B. Jacobson
Attorneys

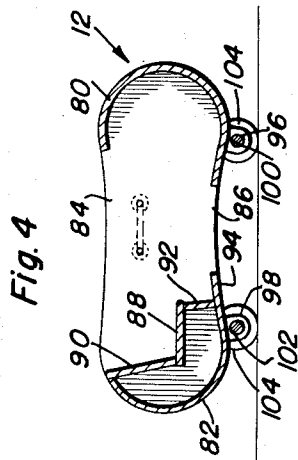
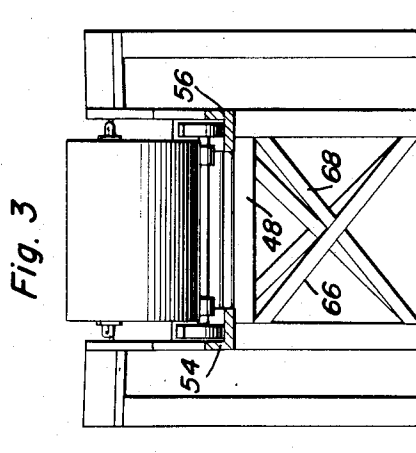
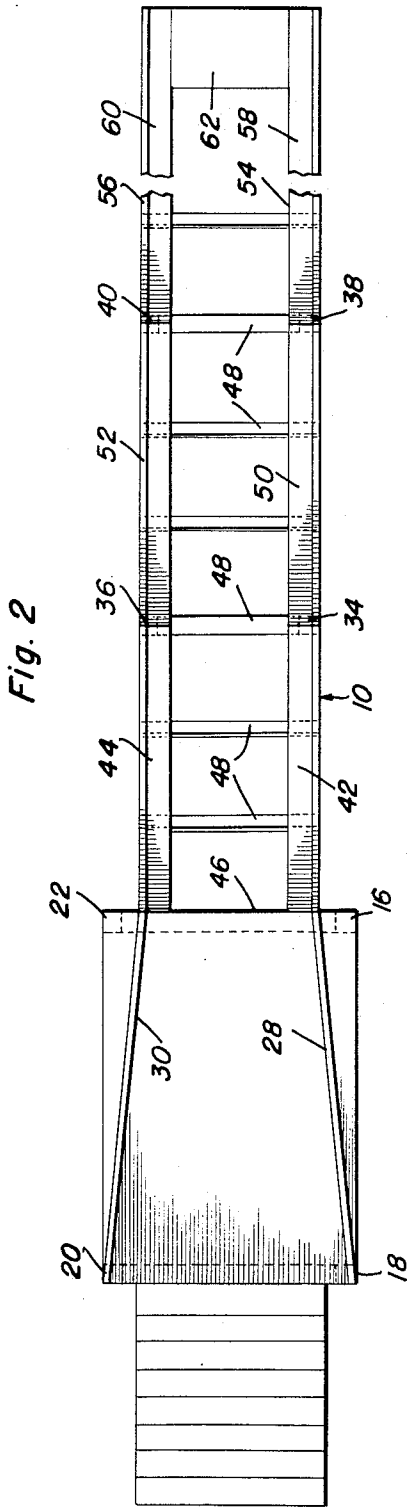
Dec. 29, 1953

W. M. ECKBRETH
AMUSEMENT DEVICE

2,664,053

Filed July 9, 1951

2 Sheets-Sheet 2



Walter M. Eckbreth

INVENTOR.

BY *Clarence A. O'Brien*
and Harvey B. Jacobson
Attorneys

UNITED STATES PATENT OFFICE

2,664,053

AMUSEMENT DEVICE

Walter M. Eckbreth, Monongahela, Pa., assignor
of one-third to J. H. Cromling, Bonola, Pa.

Application July 9, 1951, Serial No. 235,753

2 Claims. (Cl. 104—53)

1

The present invention relates to improvements in amusement devices and more particularly to the coaster and track assembly which is adapted for either home or amusement park use.

An object of the present invention is to provide a coaster and track assembly wherein a coaster of light weight is provided which is formed with an opening through the bottom whereby the coaster can be lifted by the occupant with the occupant's legs extending through the opening in the bottom of the coaster for transporting the same onto the tracks.

Another object of the present invention resides in the novel construction of the coaster whereby the same can be moved over tracks having portions of varying inclination, the configuration of the bottom of the coaster being such that interference with its forward movement will be obviated.

A still further object of the present invention is to provide a track for the track and coaster assembly whereby the coaster will be retained on the tracks for safe guided movement on the tracks.

Still other objects of the present invention are to provide an amusement device that is economical of manufacture and can be easily assembled or disassembled.

Various other objects and advantages will become apparent from the detailed description to follow. The best form in which I have contemplated applying my invention is clearly illustrated in the accompanying drawings, wherein:

Figure 1 is a side elevational view of the track and coaster assembly showing the occupant of one of the coasters standing up with the coaster supported about him, another coaster being shown moving down the track with an occupant therein;

Figure 2 is a top plan view of the track;

Figure 3 is a vertical transverse sectional view taken substantially along the plane of line 3—3 of Figure 1;

Figure 4 is a vertical longitudinal sectional view through one of the coasters of the present invention; and

Figure 5 is a detail perspective view of a coaster.

Referring more particularly to the drawings, wherein like numerals designate like parts throughout, the numeral 10 designates generally the track while the numeral 12 designates generally the coaster adapted to ride on the track 10.

As seen best in Figures 1 through 3, the track 10 is comprised of a platform 13 mounted on the supports 16, 18, 20 and 22, diagonally bracing struts 24 and 26 being provided for reinforcing the platform. The platform 14 is also provided

2

with a pair of side flanges 28 and 30 between which the coaster 12 is adapted to be placed for the beginning of the ride on the tracks.

A stairway 32 is provided for leading up to the platform 14.

In spaced relation to the supports 16 and 22 are provided pairs of standards 34 and 36 and 38, 40. Angle iron track sections 42 and 44 have their upper ends secured to the beam 46 joining the supports 16 and 22 beneath the platform 14. The lower ends of the track sections 42 and 44 are engaged on the upper ends of the standards 34 and 36. Tie rods 48 join the track sections 42 and 44 at intermediate portions thereof.

Additional pairs of track sections 50, 52 and 54, 54 are provided and interconnected to form a continuous track including sections of various inclinations. The standards 38 and 40 are adapted to support the joints of the track sections 50 and 54 and 52 and 56.

The lowermost track sections 58 and 60 are integrally formed with the end plate 62 which has a flat portion 64 for engagement with the ground.

The standards 34, 36 and 38, 40 have cross braces 66 and 68 secured thereto for rigidifying the support for the tracks.

Looking now at Figures 4 and 5, the coaster 12 will be seen to comprise side walls 70 and 72 having arcuate forward and rear edges 74 and 76 and upwardly arcuated lower edges 78. The side walls 70 and 72 are joined by the forward and rear arcuate walls 80 and 82, the coaster being open at its top at 84 and at its bottom at 86. A seat 88 joins the side walls 70 and 72, as do the back rest 90 and seat supporting wall 92. The forward portion 94 of the rear wall 82 provides a foot rest for the occupant of the coaster.

Secured to the undersides of the front and rear walls 80 and 82 are bearing brackets 96 and 98 which support the shafts 100 and 102. The shafts are provided with wheels 104 for supporting the coaster.

Suitable handles 106 are secured to the outer surfaces of the side walls 70 and 72.

In view of the foregoing description of the structure of the present invention, it is believed that one skilled in the art can readily understand the manner in which the amusement device can be employed.

An occupant steps into the coaster 12 and lifts the coaster about himself in the fashion shown in Figure 1, supporting the coaster by the handles 106. He thus climbs the stairs 32 to the platform 14 and seats himself within the coaster. The occupant then moves himself forwardly by

3

engagement between his feet and the platform 14 through the bottom openings 86 in the coaster. The coaster will then pass down the tracks between the unstanding portions of the track for guided movement to the end 62.

Inasmuch as the various degrees of inclination of the various sections of the track may be considerable, the lower edges 78 of the side walls 70 and 72 are sufficiently upwardly arcuated to prevent contact with the ridges formed by the differing inclinations of the sections of the tracks.

Having described the invention, what is claimed as new is:

1. An amusement vehicle comprising a pair of side walls joined by front and rear walls and having a seat mounted therebetween, said vehicle having an open top and bottom, and handles formed on the side walls whereby the vehicle can be lifted by the occupant of the vehicle, the open bottom of the vehicle being of such a size that the legs of the vehicle occupant may extend therethrough enabling the occupant to stand

4

upright and walk freely while surrounded by the vehicle and supporting the same by the handles.

2. An amusement vehicle comprising a pair of side walls joined by front and rear walls and having a seat mounted therebetween, said vehicle having an open top and bottom, and handles formed on the side walls whereby the vehicle can be lifted by the occupant of the vehicle, the open bottom of the vehicle being of such a size that the legs of the vehicle occupant may extend therethrough enabling the occupant to stand upright and walk freely while surrounded by the vehicle and supporting the same by the handles, the bottom edges of said side walls being upwardly arcuated, and wheels mounted on the vehicle for supporting the same for movement over a supporting surface.

WALTER M. ECKBRETH.

References Cited in the file of this patent

UNITED STATES PATENTS

Number	Name	Date
2,318,958	Murphy	May 11, 1943